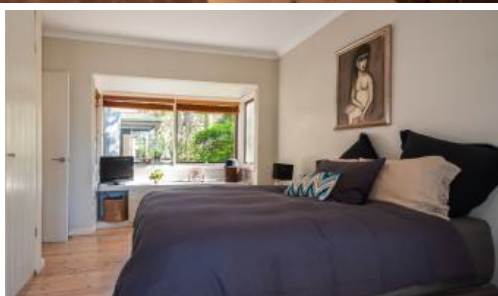


Sold



6 Kevin Ave, Scotland Island



North East Facing Home plus Separate Accommodation

This north easterly facing home is ideally positioned bathing in sunshine all day.

Located on an almost flat dual access block of approximately 885 sqm and only 200 metres to the main wharf, swimming beach, park, playground and community facilities.

Its double story design and versatile floor plan includes several entertaining decks and verandas allowing for your own personal needs.

The upper level embraces natural light through windows and several skylights and features timber floors throughout along with a combustion fire place.

The open plan lounge, dining and modern kitchen lead onto a large entertaining and bbq deck plus another covered veranda.

Consisting of three bedrooms, two with built-ins and two enjoying their own sun filled balconies plus a large family bathroom .

 4  2  885 m²

Price SOLD for \$1,630,000

Property Type Residential

Property ID 452

Land Area 885 m²

Agent Details

Melanie Marshall - 0415 440 662

Julie Rodgers - 0438 635 048

Office Details

PMC Hill Real Estate

02 9999 4902



The lower level is incorporated by an internal stairway to the main house or can be closed off for a completely separate self-contained flat.

This space has its own entrance which includes a lounge, a spacious bedroom that could be converted into two, new bathroom/ laundry and a kitchenette.

It would also make a very good home office.

A large entertaining deck leads down to the fully landscaped gardens which includes two garden sheds.

This light filled north east home with filtered water views is one not to be missed.

The above information provided has been furnished to us by the vendor/s. We have not verified whether or not that information is accurate and do not have any belief in one way or the other in its accuracy. We do not accept any responsibility to any person for its accuracy and do no more than pass it on. All interested parties should make and rely upon their own inquiries in order to determine whether or not this information is in fact accurate.