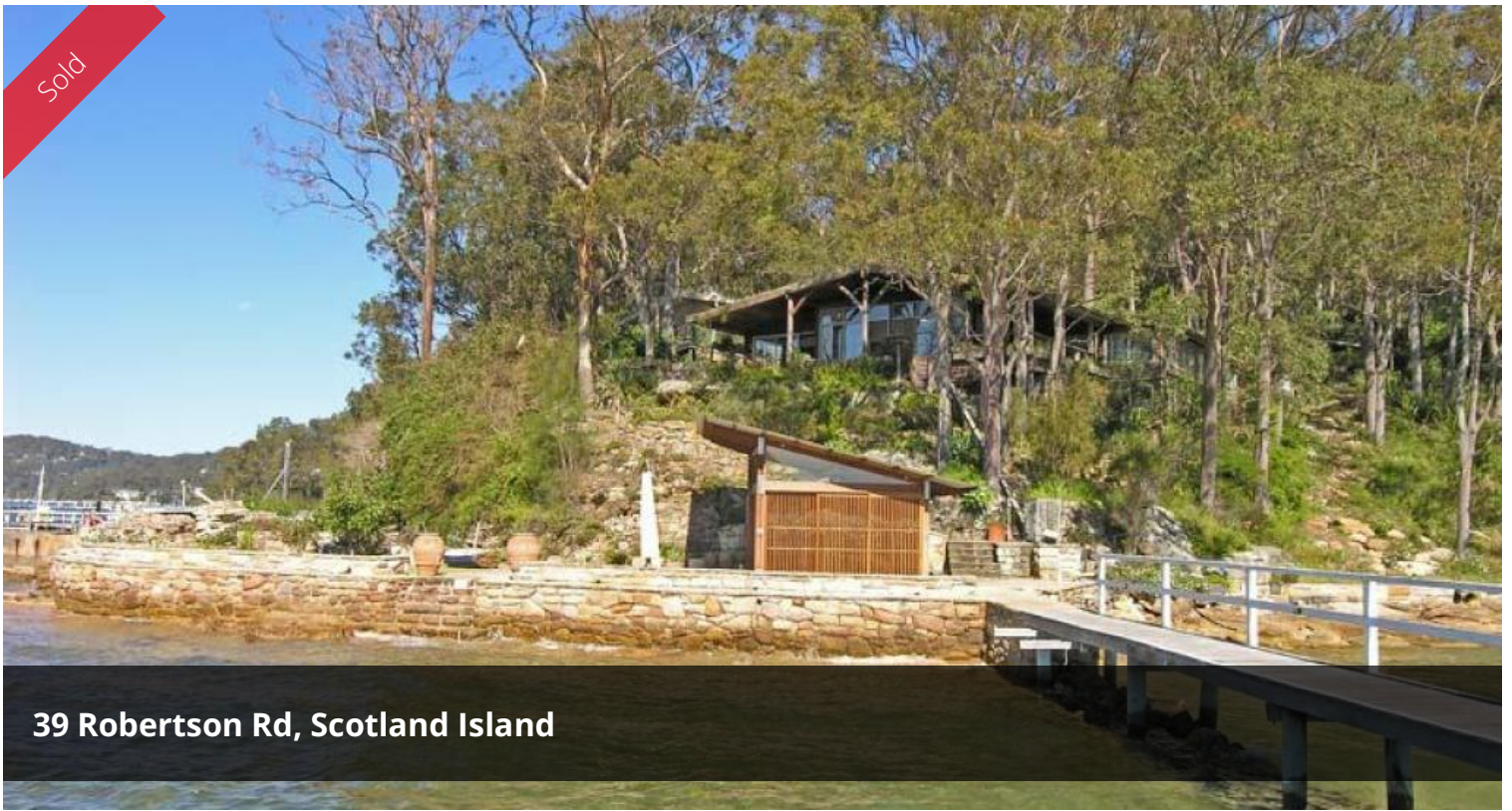
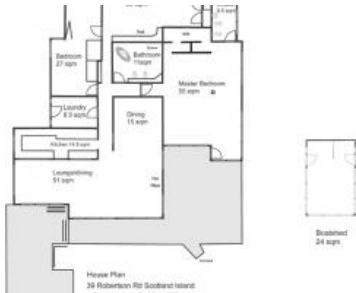


Sold



39 Robertson Rd, Scotland Island



Englesea - Live the Waterfront Lifestyle

This substantial and well presented deep waterfront residence is a prestigious property on Scotland Island and presents an extremely attractive lifestyle opportunity on approx. 1523 sqm of land with a 28 metre wide waterfrontage (approx).

Well designed to capture the sought after northerly aspect, the home takes advantage of the sweeping Pittwater views and the beauty of the adjacent National Park.

Extensive use of timber, glass and sandstone throughout the property blend to create an appealing and well lit home.

The open plan living area with high ceilings encompasses a lounge with an open fire place, a modern kitchen and casual dining area.

The master bedroom has picture windows to capture the water views, a generous walk in wardrobe and a well appointed en suite.

The other bedrooms can be flexibly configured to provide three bedrooms or two bedrooms plus an office area. There is a separate entrance to two of

3 2 1,523 m²

Price	SOLD
Property Type	Residential
Property ID	188
Land Area	1,523 m ²

Agent Details

Melanie Marshall - 0415 440 662

Office Details

PMC Hill Real Estate
02 9999 4902



these bedrooms and a separate toilet.

With modern clean lines the main bathroom is well proportioned, has a stand alone bath and glass clad walls.

The waterfront can be accessed either through the property's gardens or via the inclinor. The modern boat shed is a generous size with walls that slide open to access the spacious sandstone patios and an expansive grassed area.

From the sandstone seawall, the jetty takes you to a private pontoon which provides access to a protected boat pen suitable for berthing.

The landscaped gardens, waterfront facilities, spacious dwelling and sweeping views all combine to make this a great property.

Don't miss out on this opportunity to buy.

The above information provided has been furnished to us by the vendor/s. We have not verified whether or not that information is accurate and do not have any belief in one way or the other in its accuracy. We do not accept any responsibility to any person for its accuracy and do no more than pass it on. All interested parties should make and rely upon their own inquiries in order to determine whether or not this information is in fact accurate.